

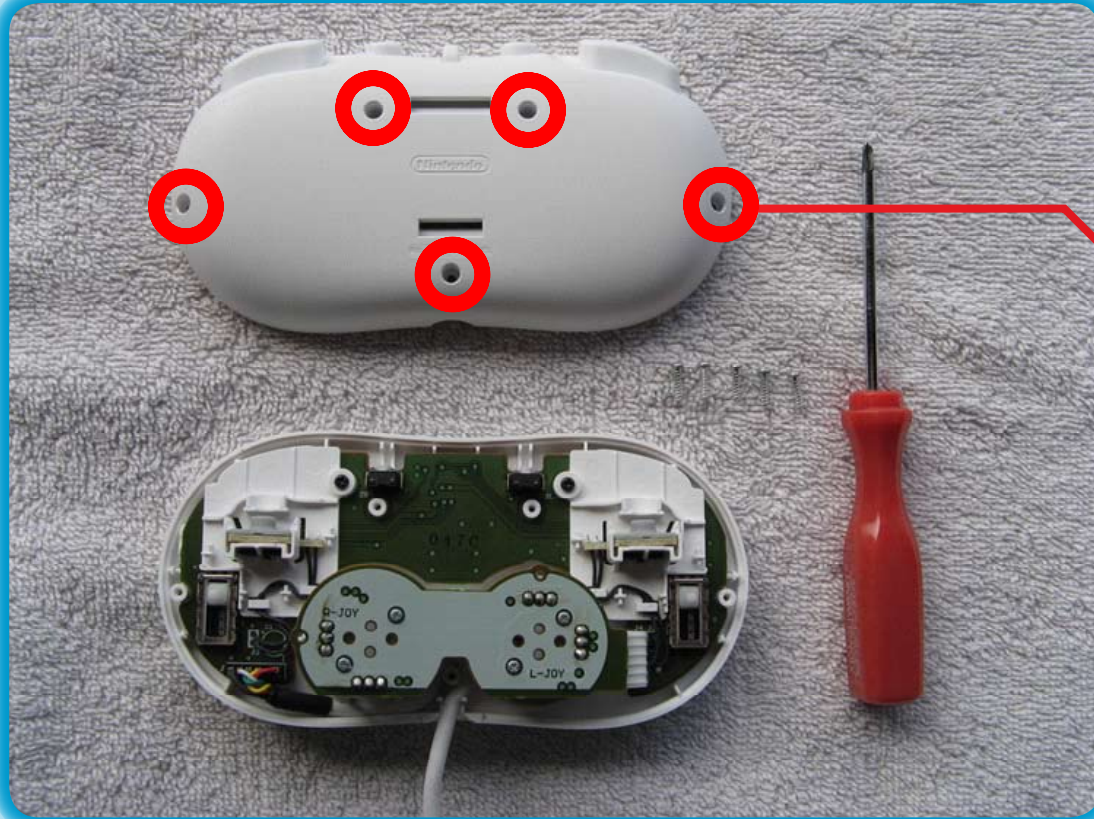
Wire back to top mod

Fed up with the wire sticking out of your Wii Classic Controller's bottom?

This guide explains how you can easily modify your controller so that the wire sticks out on the right side once again!



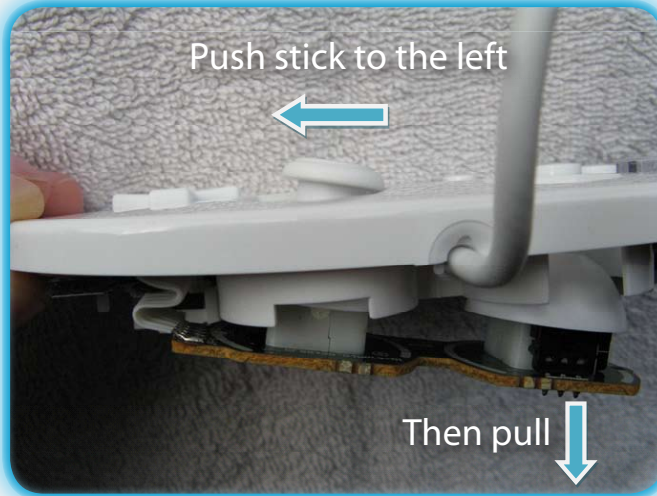
1.



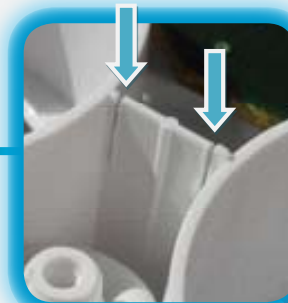
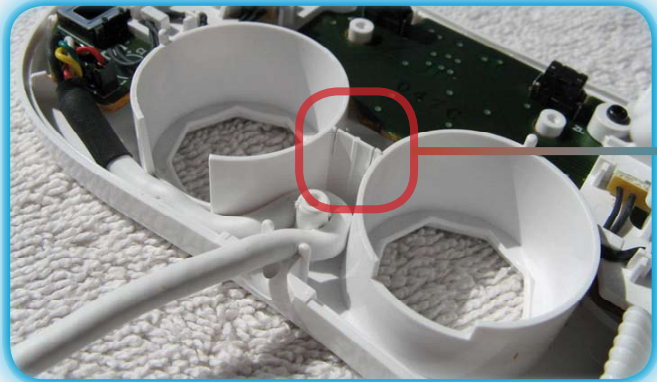
Open your controller and make sure not to lose your screws :)



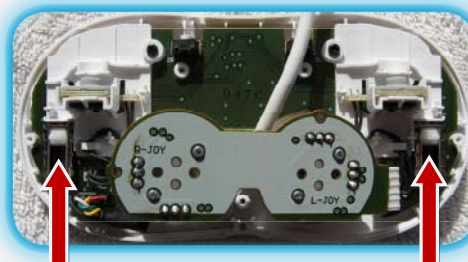
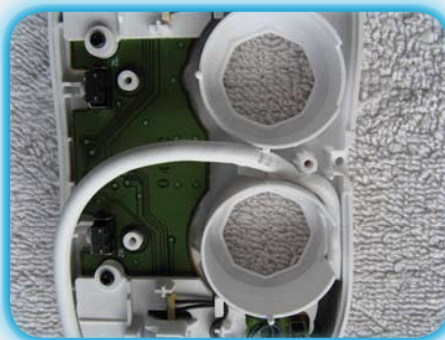
2.



3.



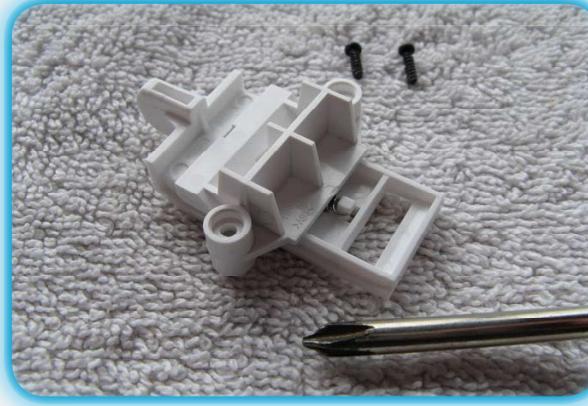
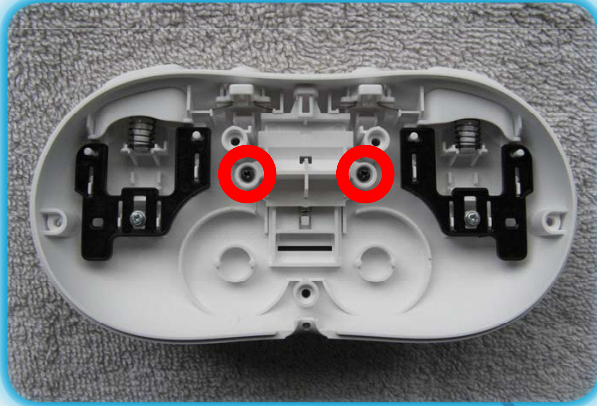
4.



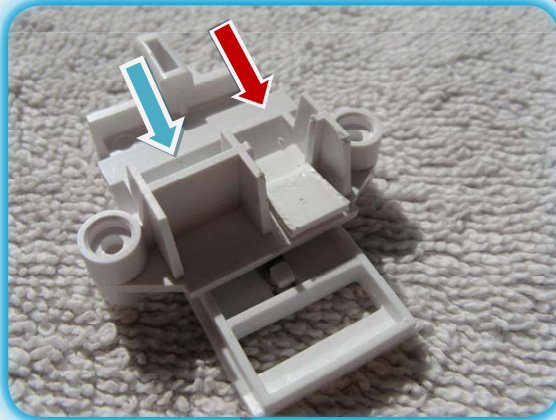
Check both slider's position (should be all upwards).

Use a sharp knife to push through the plastic. Then bend it inwards and reroute the wire. Then put the sticks back.

5.



6.

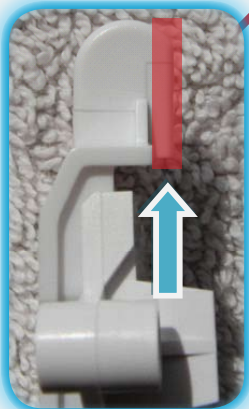


5: You can unhook the spring separating the two pieces of plastic if you prefer.

6: Perform step 3 at the red or the blue side. Although the red one is done here, cutting on the blue side is recommended.



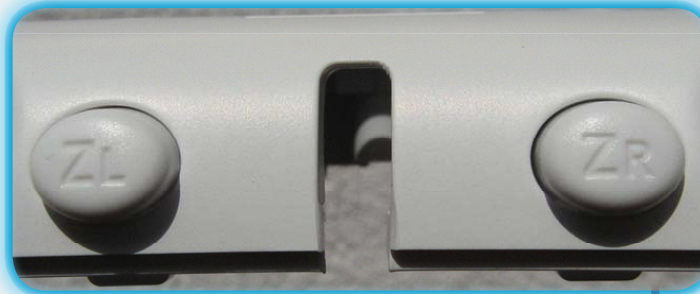
7.



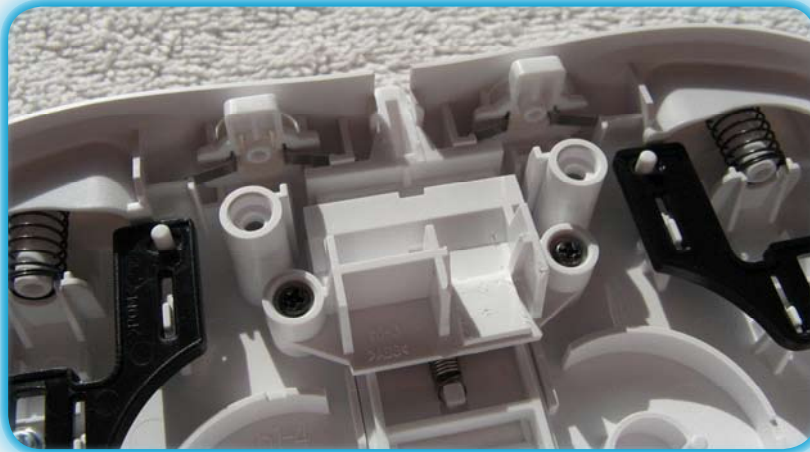
7: Hard part: cut away as indicated. Leave no sharp edges, round them (or risk getting cuts in the wire when finished).



8.



9.

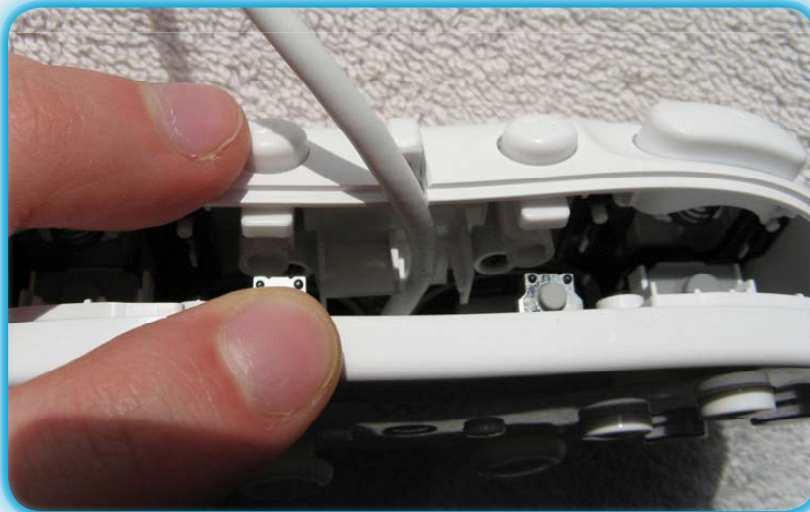


8: Also make sure not to leave sharp edges here.

9: Reassembly: screw the two pieces of plastic with the spring back into place.



10.



10: Close up the controller and run the wire through the openings that you have created. You can use the shaft of a screwdriver to push the wire into the gap, as indicated by the arrow. Then use the tri-wing for the last five screws on the backside. Tighten them firmly.



Finished! Enjoy...

